

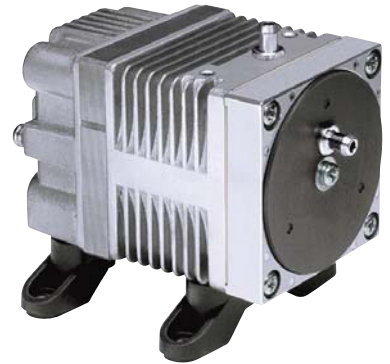
VACUUM PUMP

LINEAR

VP0125

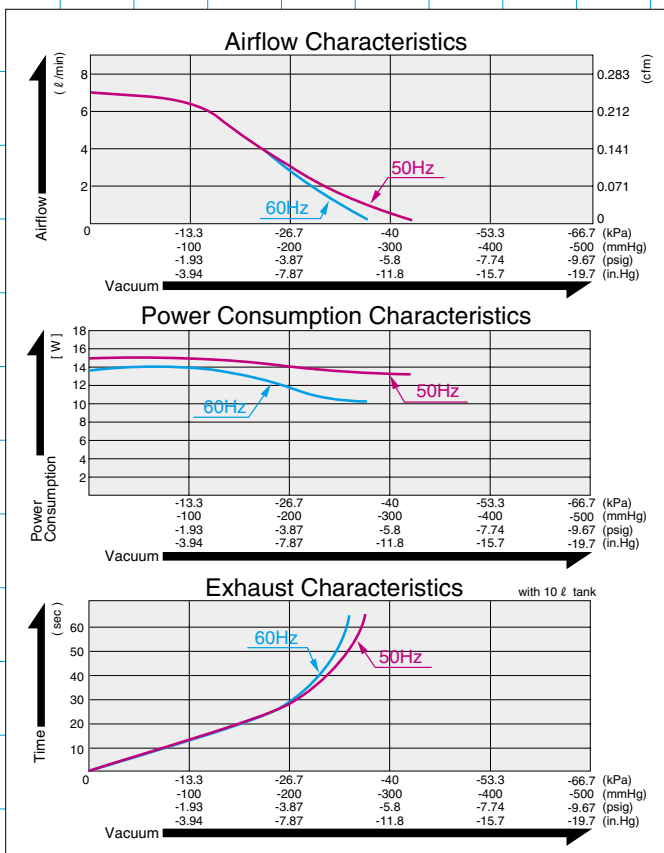


**MOTOR FREE
PISTON SYSTEM**



Airflow & Power Consumption

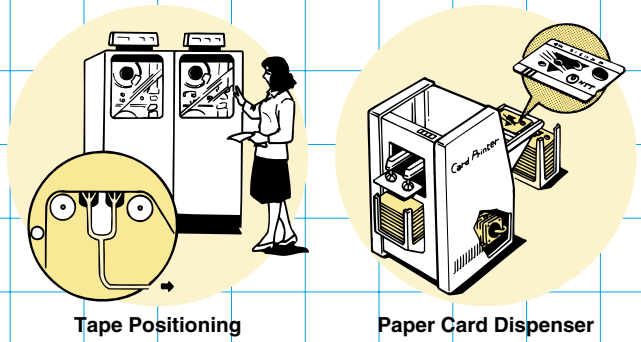
Specifications



	(SI)	(EURO)	(U.S.A.)
Attainable Vacuum	-33.3 kPa (-250 mmHg)	-333 mbar	-9.84 in.Hg
Free Air Displacement	7 l/min		0.247 cfm
Rated Voltage	115 V AC or 230 V AC		
Power Consumption	14 W or 15 W		
Rated Frequency	60 Hz or 50 Hz		
Life Expectancy	3,000 hours		
Inlet	6 mm O.D. hose nipple		
Outlet	6 mm O.D. hose nipple		
Duty Cycle	Continuous		
Coil Insulation Class	E or its equivalent (JETL) and B for UL		
Mounting Dimensions	48 (L) x 62 (W) mm	1-7/8" (L) x 2-7/16" (W)	
Gross Weight	0.7 kg	1.54 Lbs.	
Leadwire Length	200 mm	7-7/8"	

Please read the page of "How to Use This Catalog" first for correct use of compressors and pumps.

Application Examples



Sketch Drawing and Mounting Dimensions Diagram (mm)

