

VSO-EV Vacuum Control Module

Pressure Controllers



The VSO-EV™ is a pressure controller specifically configured and optimized for vacuum pressure control. The VSO-EV converts a variable electrical control signal into a closed-loop, tightly regulated pneumatic output. Often used for aspirating liquid samples, as well as for pipetting and dispensing nano-liter volumes, the VSO-EV offers users an internal sensor to close the control loop around critical system parameters. This EVC is well suited for high precision automated laboratory instruments, meeting the most stringent separation and detection requirements.

Features

- Low weight and low power consumption
- Ensures high accuracy and unparalleled resolution
- Tested for long life
- Offers internal closed loop control and external pressure sensor capability*
- OEM application-specific configurations available
- Analog control

*Accessories Required

Physical Properties

Valve Technology:
Thermally compensated proportional valve
Media:
Non-corrosive gases
Operating Environment:
0 to 55°C (32 to 131°F)
Storage Temperature:
-40 to 65°C (-40 to 131°F)
Length:
2.25 in (57.15 mm)
Width:
2.25 in (57.15 mm)
Height:
1.25 in (31.75 mm)
Porting:
10-32 female ports

Electrical

Power:
24 VDC \pm 10%
Input Control Signal:
0-5 VDC standard 4-20 mA available
Monitor Output Voltage:
0-5 volts
Current Requirement:
<400 mA
Electrical Connector:
RJ-45

*Contact factory for details.

Performance Characteristics

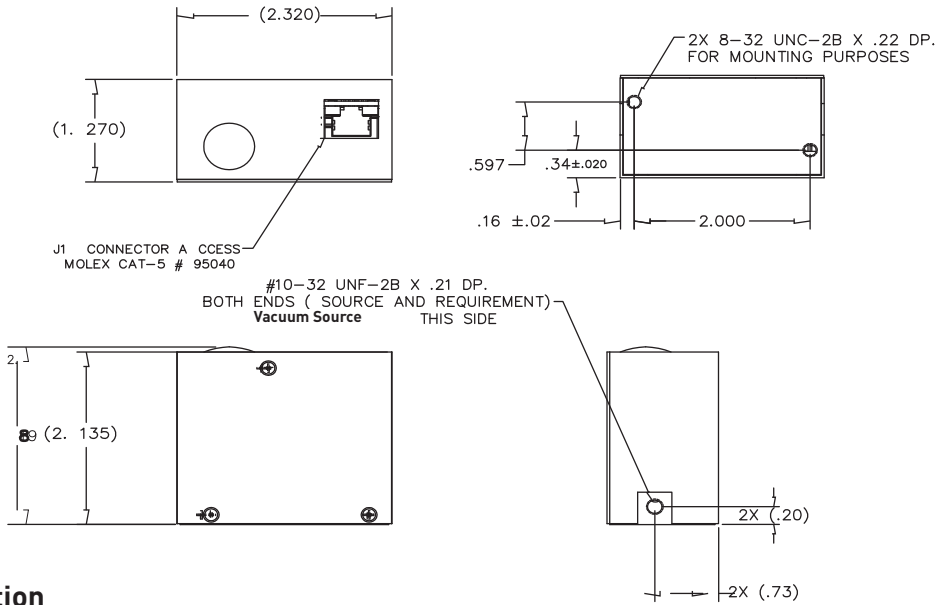
Vacuum Ranges:
0-150 mBar 0-345 mBar Custom units available
Pressure Accuracy:
\pm 0.2% FS typical* \pm 1.5% FS max
Response:
<15 msec (Response time to target pressure is output volume dependent)
Linearity:
< \pm 1.0% FS

VSO is a registered trademark of Parker Hannifin Corporation.

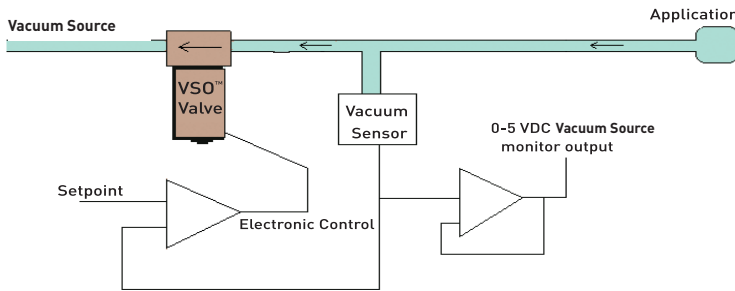


VSO-EV Vacuum Controllers

Dimensions



Configuration



VACUUM CONTROL: STANDARD CONFIGURATION

Custom configurations are available. Contact factory for details.

Ordering Information

Part Number	990-005203-005	990-005201-002
Family	VSO-EV	VSO-EV
Effective Orifice	0.003	0.01
Power	22 vdc	23 vdc
Control Voltage	0-5 vdc	0-5 vdc
Vacuum Range	0-345 mBar	0-150 mBar
Buy Online	y	N

CAT 5e Plug-in (RJ-45) Connector (included)	
Signal	RJ-45 Pin # Color
Main Power, 24 VDC	1 White w/ Orange
Input Control Signal, 0-5 VDC	2 Solid Orange
Monitor Signal Output, 0-5 VDC	3 White w/ Green
System Ground	4 Solid Blue



NOTE: Please consult Parker Precision Fluidics for other considerations. For more detailed information, visit us on the Web, or call and refer to Performance Spec. #790-002219-001 and Drawing #890-003146-001.

PPF-EPC-002/US Sept 2009

For more information call 1 .800.525.2857 or email ppfinfo@parker.com
Visit www.parker.com/precisionfluidics

