

TUBE-TO-TUBE

Reducer Fittings

Expanded Product Offering

New to Nordson MEDICAL's comprehensive line of tube-to-tube fittings - Y reducers, tee reducers, and our patent-pending manifold reducers. Tubing IDs range from 1/8" to 1", and all are available in polypropylene with our popular 600 series barbs.



Features & Benefits

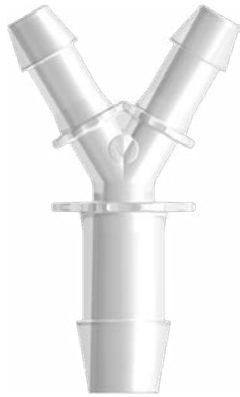
- Materials are USP Class VI certified
- Y, tee, and multi-port configurations
- Provides a range of assembly forces, pulloff resistance, and blowoff resistance
- Reduces the need for clamps

Specifications

- **Materials:**
Animal-Free Natural Polypropylene
- **Tubing Sizes:**
1/8" (3.2 mm) to 1" (25.4 mm) Tubing ID
- **Barb Styles:**
600 Series Barbs

TUBE-TO-TUBE

Reducer Fittings



Y Reducer Fittings

Y630/655 (-6005)

Y Reduction Connector with 600 Series Barb, 1/8" x 2 (3.2 mm) and 1/4" (6.4 mm) Tubing ID

Y670/680 (-6005)

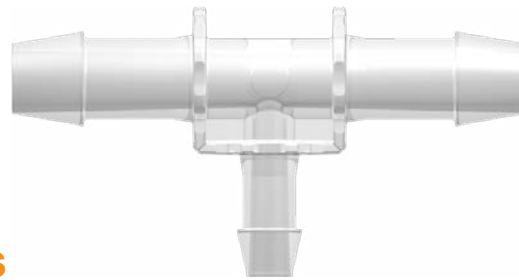
Y Reduction Connector with 600 Series Barb, 3/8" x 2 (9.5 mm) and 1/2" (12.7 mm) Tubing ID

Y655/670 (-6005)

Y Reduction Connector with 600 Series Barb, 1/4" x 2 (6.4 mm) and 3/8" (9.5 mm) Tubing ID

Y6100/6110 (-6005)

Y Reduction Connector with 600 Series Barb, 3/4" x 2 (19.0 mm) and 1" (25.4 mm) Tubing ID



Tee Reducer Fittings

T670/655 (-6005)

Tee Reduction Connector with 600 Series Barb, 3/8" x 2 (9.5 mm) and 1/4" (6.4 mm) Tubing ID

T680/670 (-6005)

Tee Reduction Connector with 600 Series Barb, 1/2" x 2 (12.7 mm) and 3/8" (9.5 mm) Tubing ID

T6100/680 (-6005)

Tee Reduction Connector with 600 Series Barb, 3/4" x 2 (19.0 mm) and 1/2" (12.7 mm) Tubing ID

T680/655 (-6005)

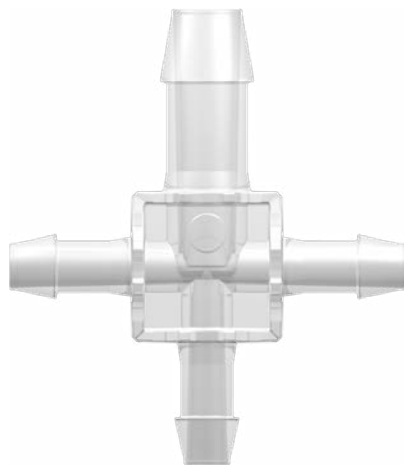
Tee Reduction Connector with 600 Series Barb, 1/2" x 2 (12.7 mm) and 1/4" (6.4 mm) Tubing ID

T6100/670 (-6005)

Tee Reduction Connector with 600 Series Barb, 3/4" x 2 (19.0 mm) and 3/8" (9.5 mm) Tubing ID

T6110/6100 (-6005)

Tee Reduction Connector with 600 Series Barb, 1" x 2 (25.4 mm) and 3/4" (19.0 mm) Tubing ID



Multiport Reducer Fittings

4PX670/655 (-6005)

Four-Port Cross Style Manifold with 600 Series Barb, 3/8" (9.5 mm) and 1/4" x 3 (6.4 mm) Tubing ID

4PX680/670 (-6005)

Four-Port Cross Style Manifold with 600 Series Barb, 1/2" (12.7 mm) and 3/8" x 3 (9.5 mm) Tubing ID

MAR-BiopT2Reducers-DS-01

Nordson MEDICAL
805 West 71st Street
Loveland, CO 80538, U.S.A.

+1.888.404.5837
+1.970.267.5200
nordsonmedical.com

The logo for Nordson MEDICAL, featuring a blue stylized wave above the word "Nordson" in a bold, blue, sans-serif font, with "MEDICAL" in a smaller, blue, sans-serif font below it.