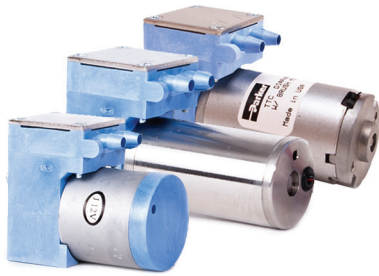


TTC Series

Up to 6 LPM Free Flow




Miniature Diaphragm Pumps (air/gas)

TTC Miniature Diaphragm Pumps are a series of brush and brushless DC motor driven pumps, which are tailored to meet specific application performance requirements. An innovative compact design incorporates leading edge technologies that allow them to operate more efficiently than existing pump designs. TTC Pumps offer multiple component configurations for use in either vacuum, pressure, or alternating vacuum and pressure operations. TTC Series is best for compact and low pressure applications that require high efficiency.

Typical Applications

- Gas Analysis
- Anesthesia Monitors
- Compression Therapy
- CO₂ Monitors
- Wound Therapy
- Trace Detection
- Medical/Training Mannequins
- Degassing

Features:

- TTC Series' innovative and efficient design pushes the performance envelope in a lightweight, compact size which allows it to operate at the highest performance/size ratio.
- Highest efficiency in class. The TTC supports low power for portable and battery powered instruments.
- Using our proprietary advanced diaphragm elastomer and superior brushless motor design sets the highest benchmark for service-free operation that exceeds 10,000 hours.
- Incorporating the lightweight EZ Mount accessory facilitates simple system assembly while dampening vibration and reducing noise levels.
- RoHS compliant. 

Product Specifications*

Physical Properties

Operating Environment¹:
41 to 122°F (5 to 50°C)
Storage Environment:
-4 to 212°F (-20 to 100°C)
Media:
Air, Argon, Helium, Nitrogen, Oxygen, and other non-reacting gases
Humidity:
0 – 80% Relative Humidity
Noise Level²:
As low as 45 dB @ 12 in (30 cm) <i>Muffler recommended for additional noise reduction (see accessories)</i>
Pump Assembly Rated Life³:
PMDC Iron Core Brush - 3,000 hrs Brushless Slotted - 10,000 hrs Brushless Slotless - 10,000 hrs
Weight:
7.2 oz. (206 g) PMDC Iron Core Brush 5.0 oz. (142 g) Brushless Slotted 7.7 oz. (218 g) Brushless Slotless

Electrical

Motor Type (DC):
PMDC Iron Core Brush, Brushless Slotted, Brushless Slotless
Nominal Motor Voltages⁴:
6, 12, or 24 VDC <i>Other voltages available upon request</i>
Electrical Termination:
PMDC Iron Core Brush - 22 AWG Wire Leads, Length 10" (254 mm) Brushless Slotted Motor - 22 AWG Wire Leads, Length 20" (508 mm) Brushless Slotless - 22 AWG Wire Leads, Length 20" (508 mm)
Current Range⁵:
300-800 mA

Wetted Materials

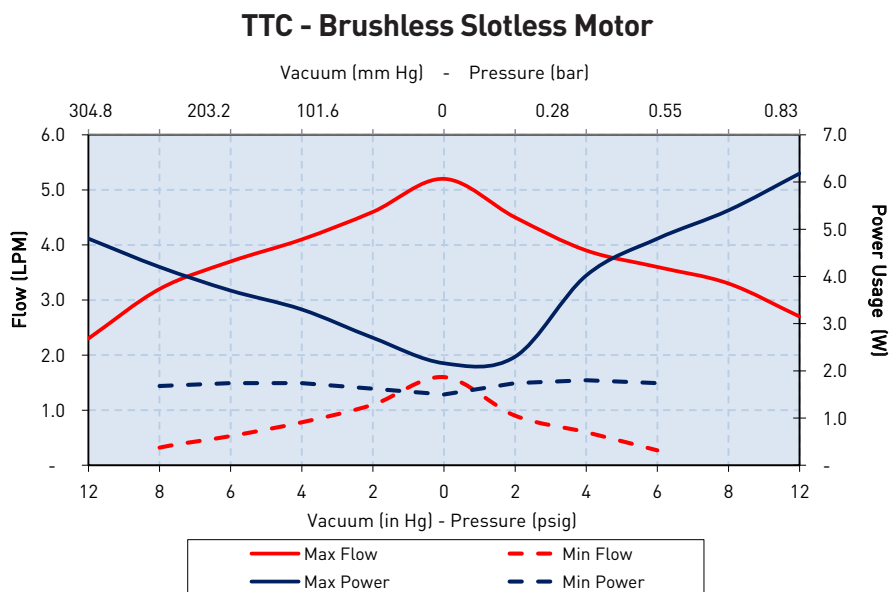
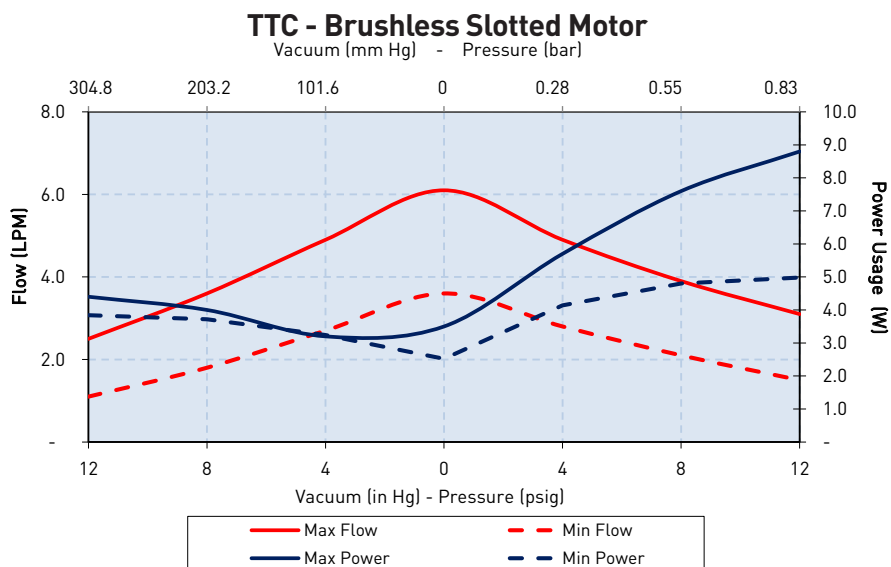
Diaphragm:	Pump Head:
EPDM, AEPDM, FKM	Vectra (Liquid Crystal Polymer)
Valves & Gaskets:	Valve Cover:
EPDM, FKM	303 Stainless Steel

Pneumatic

Head Configuration:
Single
Maximum Unrestricted Flow:
6 LPM
Pressure Range:
0 - 10 psig (0 - 0.7 bar)
Vacuum Range:
0 - 16 in Hg (0 - 406 mm Hg)
Filtration:
40 microns - recommended
Efficiency at Free Flow⁶
PMDC Iron Core Brush: 0.8 LPM/Watt (PN: TS008-13) Brushless Slotted: 1.4 LPM/Watt (PN: TS003-11) Brushless Slotless: 1.8 LPM/Watt (PN: TS001-13)

* See Appendix A for details.

Performance Specifications



The above graph represents an example of performance for the pumps series handling air at 800 feet (244m) above sea level at 75°F (24°C). Performance will vary depending on barometric pressure and media temperature. Curves are representative of standard pump configurations. Pump configurations could be customized for higher or lower flows, depending on specific customer requirements.

Please contact Parker Precision Fluidics Applications Engineering for other considerations.

TTC Series

Miniature Diaphragm Pumps (air/gas)

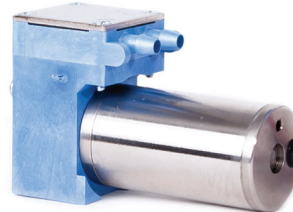
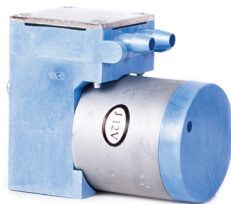
Sizing and Selection continued

TTC Series

PMDC Iron Core Brush

Brushless Slotted Motor

Brushless Slotless Motor



	PMDC Iron Core Brush	Brushless Slotted Motor	Brushless Slotless Motor
Efficiency¹	Good	Better - Up to 60% motor efficiency at low loads	Best Up to 75% motor efficiency
Life²	Good - 3,000 hrs	Best - 10,000 hrs	Best - 10,000 hrs
Cost	Best	Better	Premium
Noise	Good	Better	Best

Mounting Guidelines:

- Bracket options available for mounting consideration (See *EZ Mount catalog pages*).
- Hole in the center of the bottom of housing is for manufacturing only—not to be used for mounting.
- Mounting holes are drilled for #6-20 self-tapping screws with 1/4" (6 mm) thread engagement, torque to 4 in-lbs (0.45 N-m).

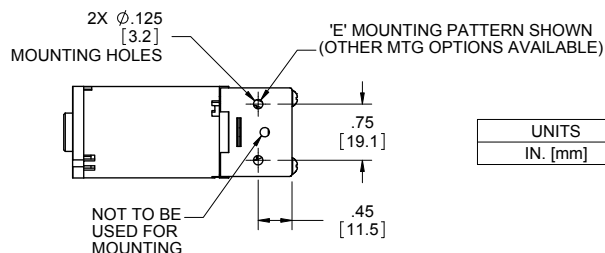
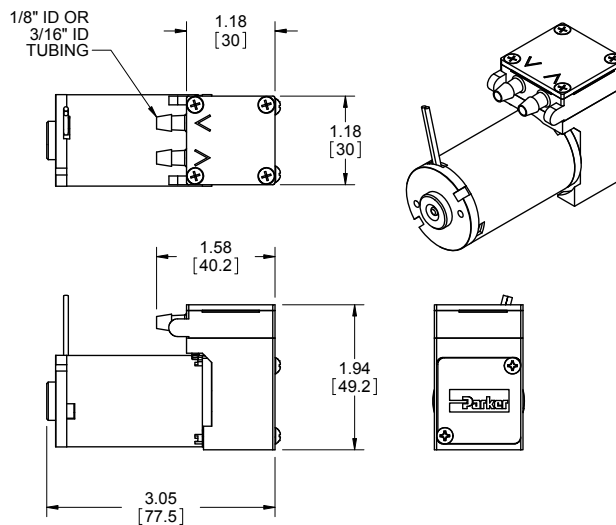
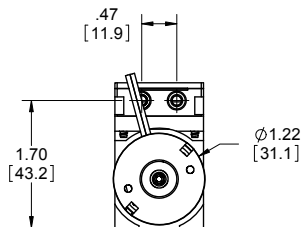
Port Connections:

- Barbs are sized for 1/8" (3 mm) ID tubing, 70-80 durometer recommended.
- Flow direction is marked on the pump head with arrows.

Mechanical Integration

Dimensions

PMDC Iron Core Brush



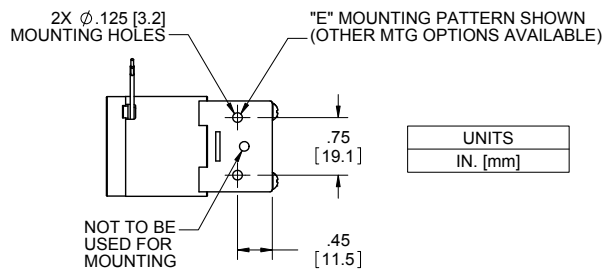
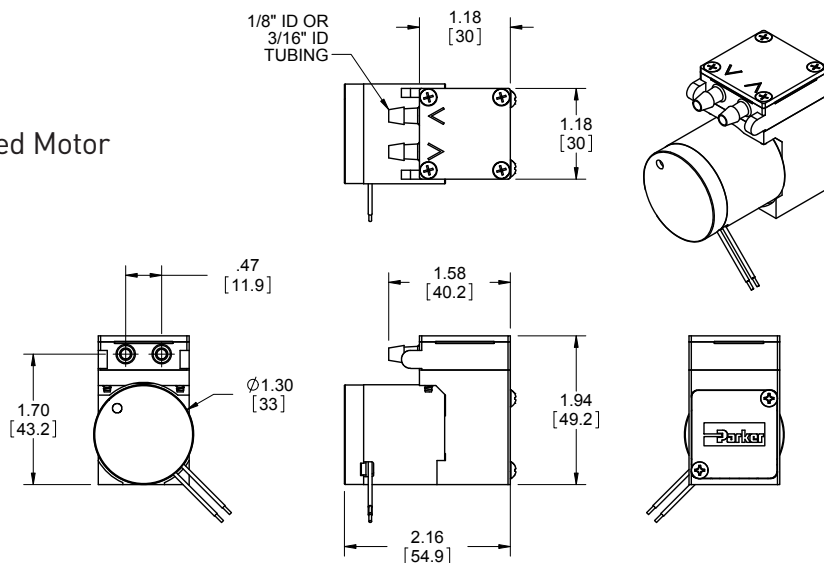
UNITS
IN. [mm]



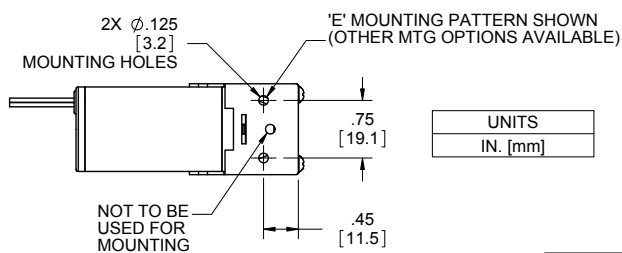
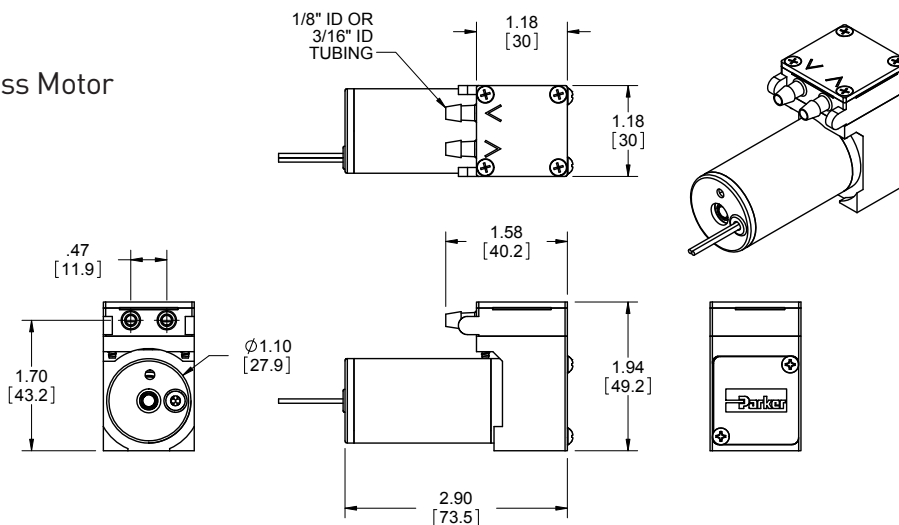
Miniature Diaphragm Pumps (air/gas)

TTC Series

Brushless Slotted Motor



Brushless Slotless Motor



TTC Series

Miniature Diaphragm Pumps (air/gas)

Electrical Integration and Motor Control

PMDC Iron Core Brush Motor

2 Wire	Red (+), Black (-)
Wire specification	22 AWG, Insulation OD 0.051 in (1.30 mm), 10" (254 mm) Wire Leads

Brushless Motor Control Options

2 Wire	Red (+), Black (-)
3 Wire (Speed Control)	Red (+), Black (-), White (PWM) or Yellow (Analog)
4 Wire (Speed Control & Feedback)	Red(+), Black (-), White (PWM) or Yellow (Analog), Blue (Tachometer)
Wire specification	22 AWG, Insulation OD 0.051 in (1.30 mm), 20" (508 mm) Wire Leads

Other Motor Control Considerations

The drive electronics for the BLDC motors are integrated into the motor itself, all that is needed is a power supply with the sufficient voltage and current.

Key Things to Remember

The pump is not a pressure holding device. An external check valve is recommended, if there is a pressure holding requirement.

Pump orientation does not affect performance or life.

Pulse Width Modulation (PWM)

Pulse-width modulation is a commonly used technique for controlling DC motors.

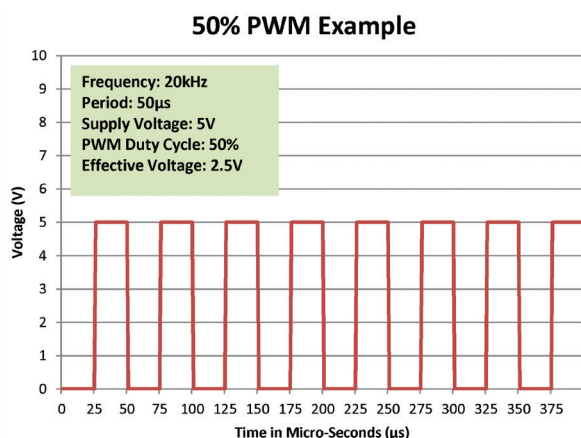
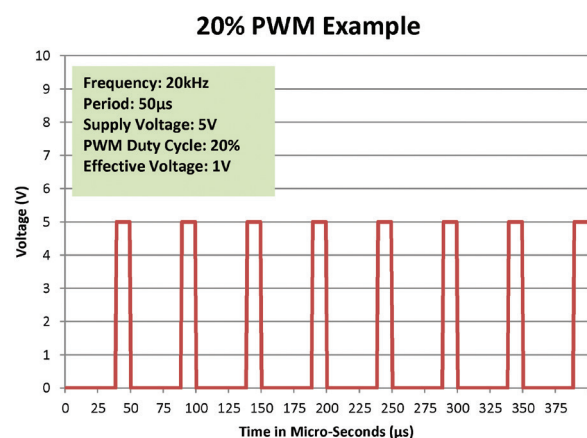
The average value of the voltage fed to the motor is controlled by turning a switch between the voltage supply and the motor on-and-off at a fast pace. The longer the switch is on compared to the off time, the higher the power supplied to the motor.

The PWM switching frequency varies for different types of devices, and is selected based on how it affects the device. For example, some applications require a faster switching frequency to prevent audible noise or electrical noise.

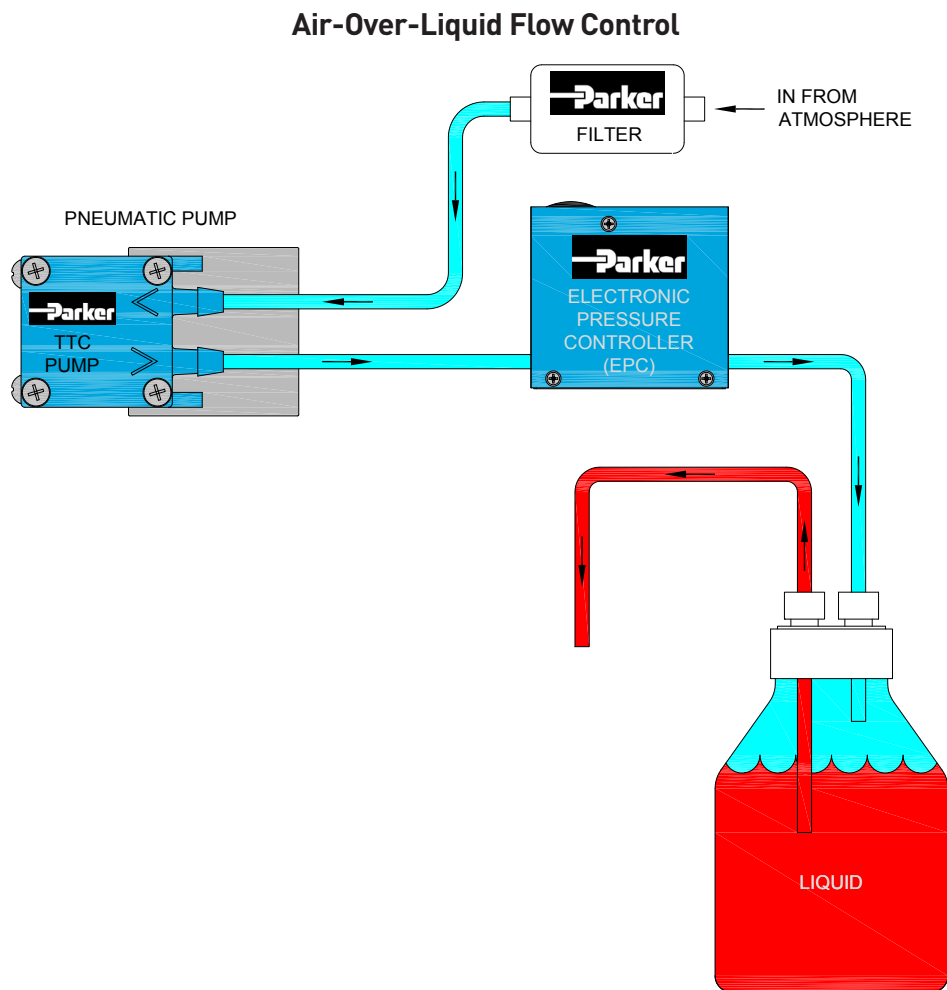
The term duty cycle describes the ratio of on-time to the period (one complete on-and-off cycle). Duty cycle is normally expressed as a percentage of on-time, 100% being full-power and 50% being half-power.

The advantage of PWM is the reduction of power-loss due to switching versus other control methods.

Parker Hannifin recommends controlling the pump using 15kHz - 20 kHz frequency range.



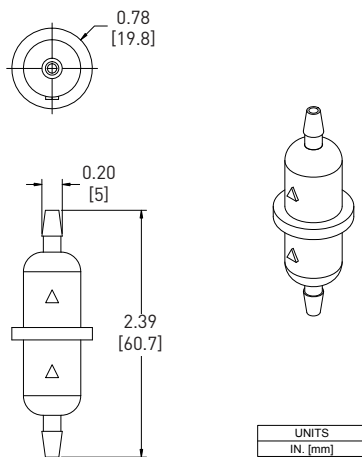
Typical Flow Diagram



Accessory Information

Filter-Mufflers also available to assist with filtration and optimize noise reduction.

Part Number: 00492-15
(Filters to 10 microns)



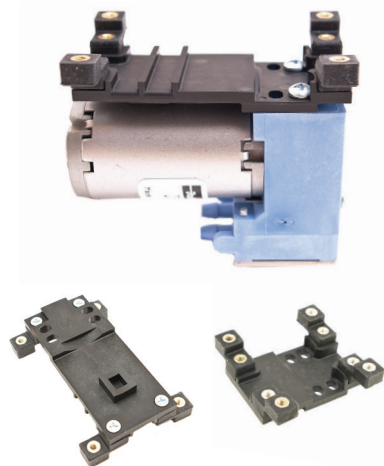
UNITS
IN. [mm]

TTC Series

Miniature Diaphragm Pumps (air/gas)

Accessory Information

EZ Mount available



EZ Mount provides ease of installation and effective control of vibration transfer. EZ Mount was designed to mount easily to the Precision Fluidic TTC Family of diaphragm pumps.

Features

- Isolation feet on the EZ mount can be rotated in any one of three ninety-degree planes and is designed for top-down or bottom-up mounting providing simple installation.
- EZ Mount was designed to minimize weight added to the pump assembly. Approximate weights are: Style A - 0.63 oz (18 g), Style B - 0.71 oz (20 g).
- Effectively absorbs vibration to minimize most vibration-induced noise and vibration transfer into an instrument.
- Designed to keep height and size to a minimum.
- Engineered for Parker TTC pumps to ease integration into your system.

Physical Properties

Operating Environment:

41 - 158°F (5 - 70°C)

Humidity:

0 - 95% Relative Humidity

Base Plate:

Noryl GTX830

Feet:

Silicone

Feet Insert:

Brass

Hardware:

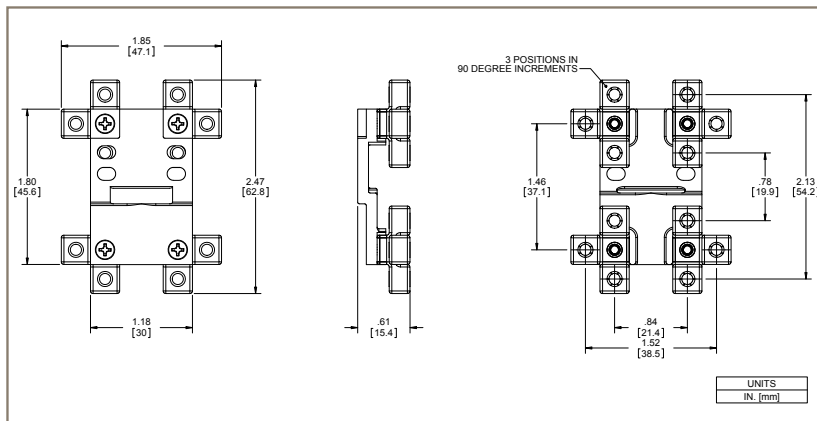
Zinc-Plated Steel

EZ Mount kits include all necessary hardware and detailed instructions.

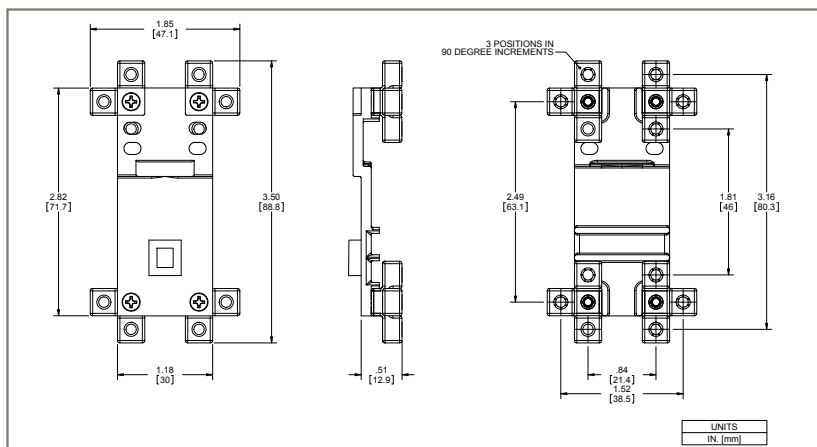
Isolation Feet are available in either threaded or thru-hole clearance for standard #4-40 (M3.5 for clearance hole only) or #6-32 hardware and can be mounted in any of three ninety-degree planes.

Dimensions

Style A



Style B



TTC Series

Miniature Diaphragm Pumps (air/gas)

Ordering Information

Please click on the Order On-line button below (or go to www.parker.com/precisionfluidics/ttc) to configure the TTC Miniature Diaphragm Pump in your application.

Serviceable – PPF products are designed for use through the rated life and Parker does not sell replacement parts, nor is it recommended to service these in the field

Note: In addition to Parker's innovative and flexible pump designs, we offer applications engineering expertise to our customers in order to configure and recommend the optimal pump for the application. Contact Parker Applications Engineering to discuss and configure alternate pump configurations to meet your specific application requirements. Providing information on the following requirements will assist us in developing an optimal solution for your application:

- Noise
- Operating Pressure / Vacuum
- Power Consumption
- Life Requirement
- Function in the Application
- Size
- Motor Control
- Media
- Voltage



Appendix A

All performance data is typical based on standard conditions: 70°F and 14.7 psia (21°C and 1 bar).

1. Duty Dependent. For operation above 122°F (50°C) consult factory
2. Noise is dependent on the configuration and operation of the pump in the application. Parker has the ability to tailor the pump configuration when noise is a critical criterion in the effort to meet the performance requirements of the application. Noise level is tested to Parker protocol P-105.
3. Life rating can vary depending on application and operating conditions.
4. Custom motor options available. Custom motors may require a significant application potential. The standard motors can be configured with a special winding to meet a particular operation point at a specified voltage
5. Current range is dependent on motor type, voltage, pressure/vacuum and flow requirement. Lower levels possible depending on application.
6. Pump efficiency is a measure of the flow rate generated per unit of power consumed. Efficiency may change dependent on application and operating condition at free flow.



